

## SSFA comparison

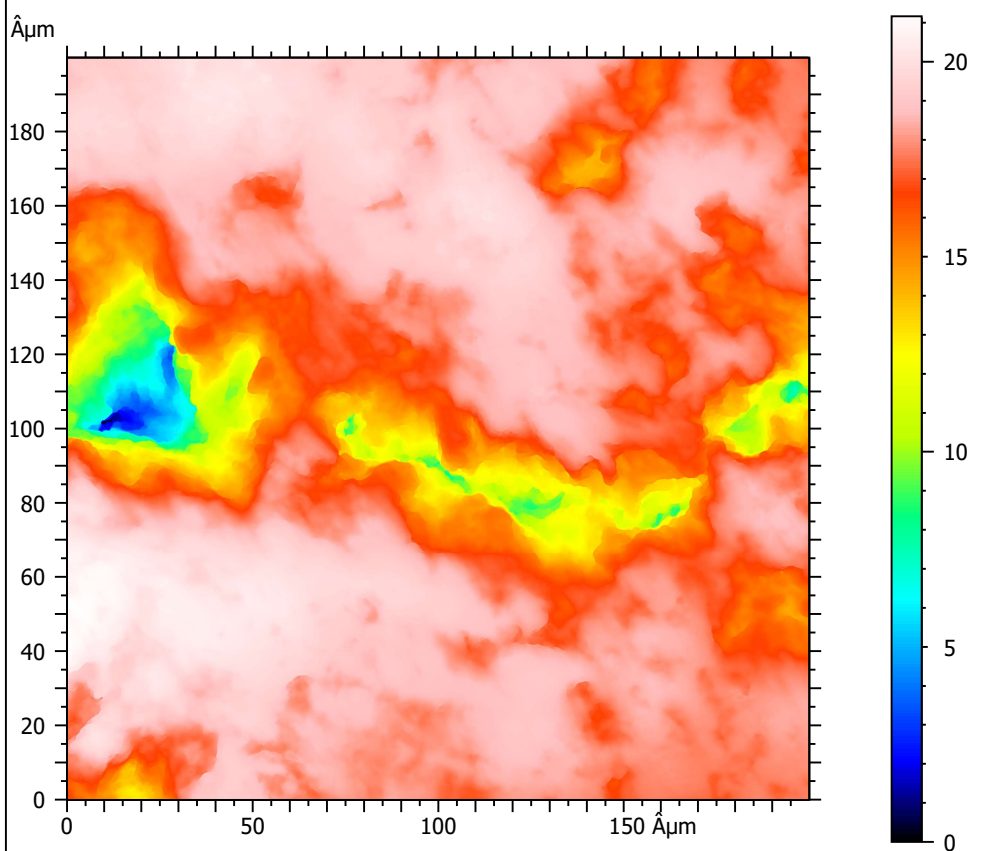
Template to process all surfaces acquired with the Leica DCM8 with the 100x/0.90 objective.

### A. Processing

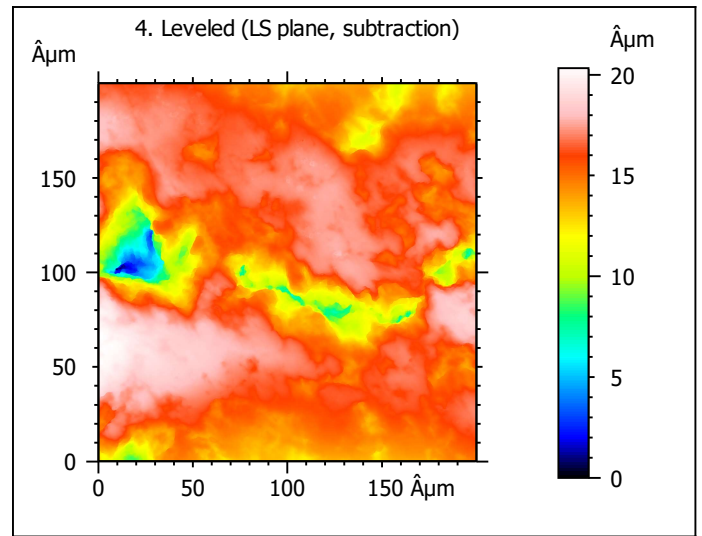
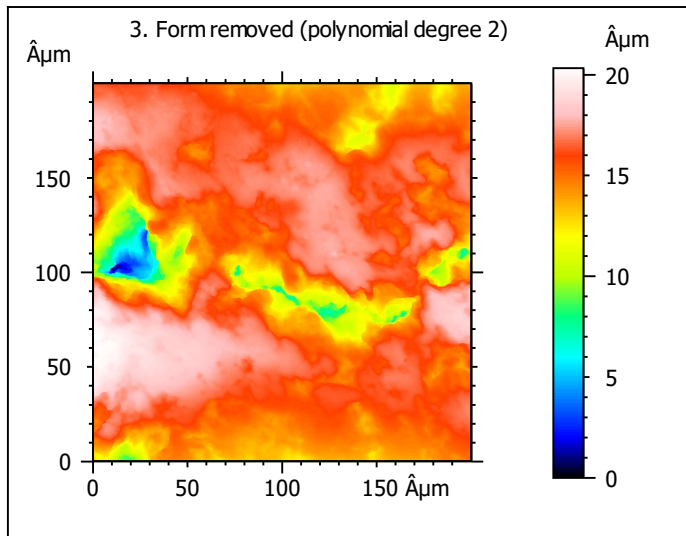
#### Identity card

Name:	L5_Ovis_10098_Im2_sin		
File path:	D:\Data\3Ddata\SSFA\Sheeps\Original surfaces\L5_Ovis_10098_Im2_sin.sur		
Studiable type:	Surface		
Axis:	X		
Length:	199.9	Âµm	
Size:	1551	points	
Spacing:	0.1290	Âµm	
Axis:	Y		
Length:	199.9	Âµm	
Size:	1551	points	
Spacing:	0.1290	Âµm	
Axis:	Z		
Length:	21.16	Âµm	
Size:	328492278	digits	
Spacing:	6.443e-08	Âµm	
NM-points ratio:	0.000 % (0 Pts)		

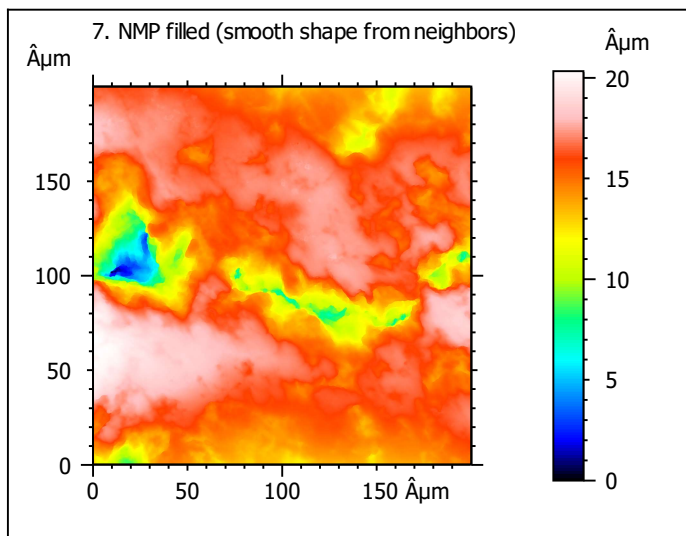
1. Acquired surface



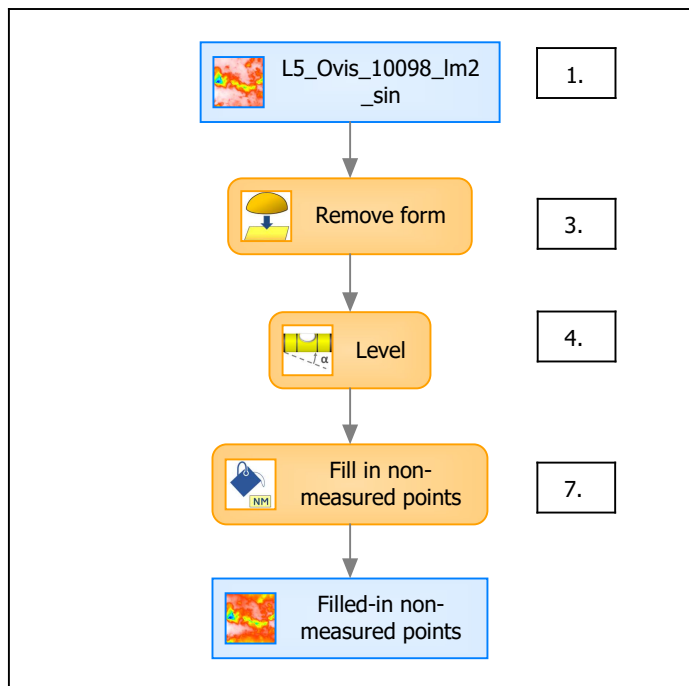
*Note that the surfaces have been preprocessed (mirrored in z, cut to 200x200 µm and automatically cleaned) according to Merceron et al. (2016), Proc. R. Soc. B 283: 20161032.*



Identity card	
Name:	L5_Ovis_10098_lm2_... > Leveled (LS-plane)
Axis:	Z
NM-points ratio:	0.000 % (0 Pts)



## B. Summary



### Identity card

Name: L5\_Ovis\_10098\_Im2\_sin > Form removed (LS-poly 2) > Leveled (LS-plane) > Filled-in non-measured points

Studiable type: Surface

#### Axis: X

Length: 199.9 Åµm  
Size: 1551 points  
Spacing: 0.1290 Åµm

#### Axis: Y

Length: 199.9 Åµm  
Size: 1551 points  
Spacing: 0.1290 Åµm

#### Axis: Z

Layer type: Unknown  
Length: 20.33 Åµm  
Size: 315492771 digits  
Spacing: 6.443e-08 Åµm

